

RICOH
imagine. change.

Getting started with RICOH THETA

Easy to Follow Instruction



 **THETA**

Have a virtual
experience
of being there.



View captured images on a smartphone to
enjoy the full 360° experience in all directions.



*To enjoy images taken by RICOH THETA with smartphone, dedicated application is needed.

▲Download the
dedicated app!



360° horizontally

360° vertically

Expanding

Reducing



What can you do with RICOH THETA? _____

Shoot Record an entire scene with a single shot.



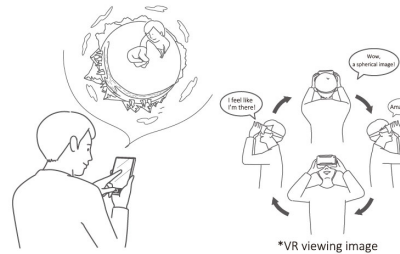
By using the application, RICOH THETA also
enables shooting using remote control
or manually.

RICOH THETA technology _____

Two super-wide-angle lenses
(fish-eye lenses)
+
Real-time image processing technology
||
Generating 360° images



View By using the application, view a 360° picture or video. _____



Watch your favorite parts from a
360° picture or video simply by
swiping and pinching. With VR headset,
the image on the display moves in
step with you.

Basic application _____



Enjoy Edit in various fun ways and share worldwide. _____



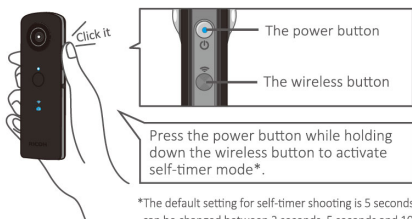
You can use various SNS and email services
to easily share 360° images with your friends,
and using the editing app lets you enjoy the
content in even more ways.

Special editing app _____



Taking Still Images

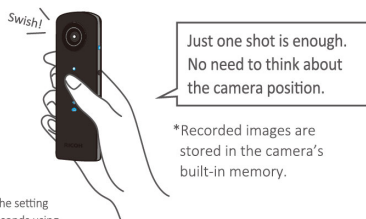
1. Turn the power on.



*The default setting for self-timer shooting is 5 seconds. The setting can be changed between 2 seconds, 5 seconds and 10 seconds using the app.

*THETA S unit requires an update for this feature.

2. Hold it still and press the shutter button.



*Recorded images are stored in the camera's built-in memory.

Explore Creative Shooting Positions!



Shoot from above your head when you don't want to stand out in the picture.



It's a good idea to bend your elbow a little when shooting.

Shooting Remotely

*All of the app screenshots featured in this booklet are from the iOS.

1. Tap the of the basic app and move to remote shooting display.



*A connection setup is necessary when connecting RICOH THETA to a smartphone for the first time. For connection methods, refer to the "Quick Start Guide" included with the product.
*Turn the smartphone's Wi-Fi mode on.

2. Tap to release the shutter.



*Wi-Fi can be connected up to approx. 10 meters away.

The LIVE view function of the basic application for RICOH THETA S allows a photo to be taken by simulating on a smartphone. (In still picture mode)

*Turn the smartphone's Wi-Fi mode on.

[You can change the shooting mode to make various adjustments including brightness and color hues]



Auto shooting



Shutter Priority



ISO Priority

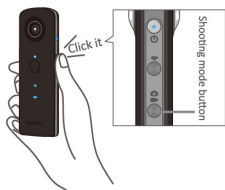


Manual

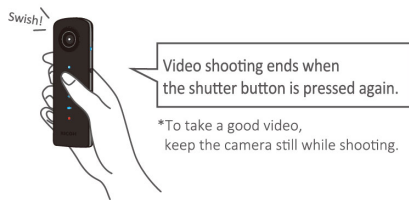


Shooting Videos

1. Press the shooting mode button and select the video mode.



2. Press the shutter button to start video shooting.



Taking a picture by remote control

1. Tap the of the basic app and move to remote shooting display.

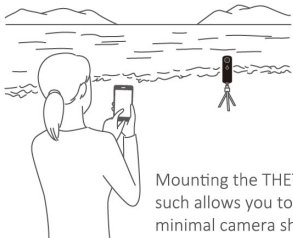


2. Tap to start recording, and tap again to stop.



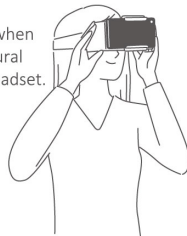
*Turn the smartphone's Wi-Fi mode on.

Fix the THETA in place when shooting!



Mounting the THETA on a tripod or such allows you to shoot video with minimal camera shake.

Fixing the THETA in place when shooting will allow for natural viewing, even with a VR headset.

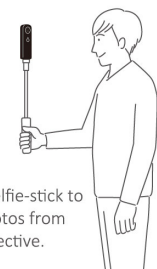


Take natural photos!

Using a tripod and remote shooting allows you to take more appealing photos.



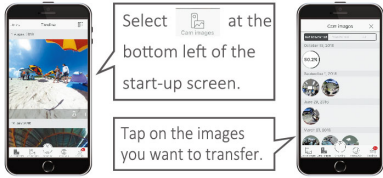
You can use a selfie-stick to take natural photos from your own perspective.



Still Images and Videos View them now!

Transferring to a Smartphone

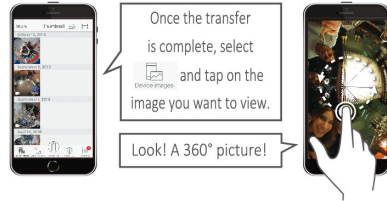
1. Launch the basic app, select [Cam images] and tap the images you want to transfer.



*Turn the smartphone's Wi-Fi mode on.

Viewing on a Smartphone


2. Select [Device images] and tap on the image you want to view.



*Pictures can also be viewed on a PC.

*Once an image has been transferred it is saved.

Viewing in VR

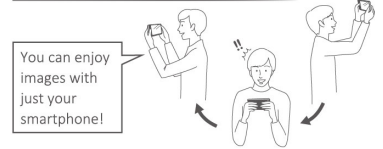
1. Select the image you want to view in the basic app, and tap  at the bottom right of the image. Choose single lens or twin lens.



*VR viewing may be unavailable on some Android devices.

2. Enjoy virtual experiences with a VR headset

Viewing in single lens mode



Viewing in twin lens mode



*Commercially available VR headsets can be used.

*Consult the instruction manual for each product for information on recommended ages.

Still Images Enjoy 360° experiences!



Check out a sample here ▼



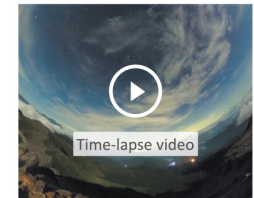
Check out a sample here ▼



Videos Enjoy 360° experiences!



Check out a sample here ▼



Check out a sample here ▼



Enjoy pictures and videos by sharing

You can easily post to SNS sites such as Twitter and Facebook from the basic app or editing app.



Using SNS

360° images taken with RICOH THETA can be enjoyed on supported SNS sites.

• Compatible SNS (examples):



Posting to Facebook

Spherical still images and videos can be posted as-is to Facebook, allowing your friends to view your content in 360°.



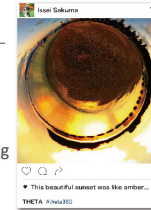
Posting to Twitter

You can upload content to the Ricoh cloud space (theta360.com) and place a link in a Twitter post. The linked page can be viewed in 360°.



Posting to Instagram

Using the THETA+ and THETA+ Video editing apps, you can share your proud creations with friends. Posting creative THETA images to Instagram is a popular style!



Posting to YouTube

YouTube supports 360° video. With the YouTube app you can easily share virtual reality experiences in VR view (twin lens).



Posting to Google Street View

Using the Street View app, you can do everything from shooting THETA images with remote control to uploading 360° images.



*These are images of submitted pictures.

Sharing without Posting to SNS

If you upload images to the Ricoh cloud space (theta360.com) without posting to a SNS, you can share the image only with those you send the URL to.

Turn off all SNS selections.



Check the uploaded image.

Send the URL

Still Images and Videos Editing

Editing Still Images

Special image editing application THETA+, to further enjoy spherical photos
 You can edit spherical photos in various ways. You can also save them on your smartphone and share them with your friends.



- Color adjustment (filters)
- Stamp
- Cut out images (cropping)
- Text
- Switch view (view)
- Sharing
- Produce time-lapse videos

As of October 2016

*Operations may vary depending on the OS.



- Timelapse editing**
 This is the mode for producing 360° timelapses videos.
 Multiple still images shot at intervals can be connected in this mode.
- Edit Image: Two editing modes are available**
 - 360 Degree Image**
 This is the mode for editing 360°. The images can be viewed and shared in the basic app.
 - Cropped Image**
 This mode is to create a cropped image that is able to post to several SNS or send e-mail with.



Create a unique view of the world



- Little Planet
- Mirror Ball
- Flat
- Straight

Create a picture that only RICOH THETA can offer by choosing a view from four options.

Freely crop 360° images



Square *Convenient for posting on Instagram

Use five types of crop to create the shot you like

Change images



Ten filters are available to change the color tones. You can also have fun decorating with stamps and texts.

Editing Videos

Use the special video editing application THETA+ Video
 For editing videos and enjoying them in multiple ways
 You can edit and share 360° videos and time-lapse videos created with THETA+



- Color adjustment (filters)
- BGM
- Cut out moving images (cropping)
- Sharing
- Switch view (view)
- Double-speed editing
- Cut the length (trimming)

As of October 2016



Two editing modes are available for selection

360 Degree Video
 This mode is to create a 360° movie. This movie can be browsed in RICOH THETA application.

Cropped Video
 This mode is to create a cropped movie that is able to post to several SNS or send e-mail with. This movie is made from image that you see on your smart phone.



Edit videos by trimming their length



You can cut videos down to the desired length.

Create a one-of-a-kind scene



- Little Planet
- Mirror Ball
- Flat
- Straight

Choose from four views to produce a video that only RICOH THETA can offer.

Change images

Choose from 10 filters to change the color tones of 360° videos.

BGM

You can add background music to your videos, and even remove the sound from your video altogether.

Explore Various Shooting Scenarios



Travel



Sports



Mountain Climbing

Wedding Ceremonies



@rallycrosslife

Time with Family and Friends



@YouMakeFashion

We recommend shooting still images or video even on regular days when nothing much is happening.

Even when it's not a particularly special day, you can record precious moments. As time passes, you will look back on moments when a child was still a baby, a grandparent was energetic or your own younger self and recreate those unassuming daily moments in the vivid detail of a 360° virtual experience.

Learn More

Go to the Official RICOH THETA accounts

This official account is loaded with information about various 360° works and ways of enjoying RICOH THETA. Follow the account to enjoy RICOH THETA even more.

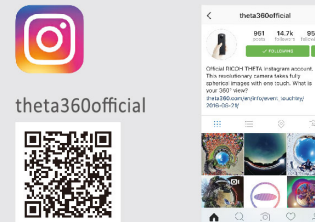
The RICOH THETA Facebook page offers extensive information including usage tips and stories behind the development of the RICOH THETA.



News related to RICOH THETA is distributed.



Filled with RICOH THETA's creative works.



Loaded with 360° videos shot using RICOH THETA.



RICOH THETA Official Website – theta360.com

The official site helps you get even more out of your THETA with the latest information on THETA and related apps, a sample gallery that allows you to rotate images, and the cloud space, which allow you to post and share the 360° spherical images you have taken.



RICOH THETA S

High-end Model

For capturing a 360° world with amazing beauty



The RICOH THETA S achieves high quality combined with excellent performance. Record a 360° spherical world with exceptional clarity and quality just the way you want, in still images or extended-length movies (up to 25 minutes).

High Resolution

- 1/2.3" 12M CMOS sensor x2 (Output pixel count equivalent to 14M)
- F2.0 lens

Full HD video Capture*1

- 30 fps •25 minutes continuous shooting

360° Live View Shooting *2

Long exposure (Maximum 60 seconds) *2

Quick start-up in around 1.5 seconds

8 GB Memory Self-timer

HD Live Streaming *3

HDMI Port (Type-D)

*1 Data is recorded in full HD (1920 × 1080) resolution, but the resolution of spherical videos when viewed differs depending on the type of display or display magnification.

*2 When THETA S basic app is used *3 Dual fish-eye output, when connected by USB

PC application

PC app for converting, viewing and sharing spherical images shot

Basic app * : Viewing, SNS posting, converting videos, writing with slant top/bottom correction

* Adobe AIR* must be installed for use.

Live streaming app: converting live streaming videos



Wi-Fi is a registered trademark of the Wi-Fi Alliance. Windows is either a registered trademark or a trademark of Microsoft Corporation in the United States and/or other countries. Mac, iPhone, App Store are trademarks of Apple Inc. iOS is a trademark of Cisco in the US and is used under license. Adobe and AIR are either trademarks or registered trademarks of Adobe Systems Incorporated in the United States and/or other countries. Facebook and "f" logo are the registered trademarks of Facebook, Inc. Twitter and Twitter logo are the registered trademarks of Twitter, Inc. Tumblr and Tumblr logo are the registered trademarks of Tumblr, Inc. Instagram and the camera logo are trademarks of Instagram, LLC in the United States and other countries. Multi-Color Camera logo is the trademark or registered trademark of Instagram, Inc. Android, Google Play, Nexus, YouTube, Google, Google Map, Google+ and Google Street View are the registered trademarks of Google Inc.

RICOH
imagine. change.

RICOH COMPANY, LTD.
RICOH IMAGING COMPANY, LTD.

RICOH THETA SC

Standard-class Model

Enjoy 360° shooting with high performance and ease of use



360° for everyone.

RICOH THETA SC offers viewers a new experience of a 360° spherical world as if they are actually there. It keeps the high image quality, but better convenience.

High Resolution

- 1/2.3" 12M CMOS sensor x2 (Output pixel count equivalent to 14M)
- F2.0 lens

Full HD video Capture*1

- 30 fps •5 minutes continuous shooting

360° Live View Shooting *2

Long exposure (Maximum 60 seconds) *2

Quick start-up in around 1.5 seconds

8 GB Memory Self-timer

Lightweight at around 102g

Four Colors

As of October 2016